

# HARD TO SAY I'M SORRY

Peter Cetera & David Foster  
Arr.: Jan Utbult

♩=72

The score is for a full band arrangement in 4/4 time with a tempo of 72 beats per minute. The key signature has two flats (Bb and Eb). The instruments listed are: Flute, Oboe, Bassoon, Clarinet in Bb 1, Clarinet in Bb 2, Bass Clarinet in Bb, Alto Saxophone 1, Alto Saxophone 2, Tenor Saxophone, Baritone Saxophone, Trumpet in Bb 1, Trumpet in Bb 2, Horn in F, Trombone 1, Trombone 2, Baritone, Tuba, String Bass, Percussion 1 (Drum Kit), Percussion 2, and Percussion 3 (Bells). The score includes dynamics such as *mf* and *Only one*. A large red watermark 'SAMPLE' is overlaid diagonally across the center of the page.

**A**

Fl. *mf*

Ob. *mf*

Bsn.

Cl. 1 *mf*

Cl. 2 *mf*

B. Cl. *mf*

Alto Sax. 1

Alto Sax. 2

Ten. Sax.

Bari. Sax.

Tpt. 1

Tpt. 2

Hn.

Tbn. 1

Tbn. 2

Bar.

Tba. *(Bsn. B.Cl. B.Sax.)*

S. Bass *Bb (Bsn. B.Cl. B.Sax.)* *Dm7* *Eb* *Gm7* *F* *Bb* *Dm7* *Eb*

**A**

Dr.

Perc.

Bells

B

Fl. 13

Ob.

Bsn.

Cl. 1

Cl. 2

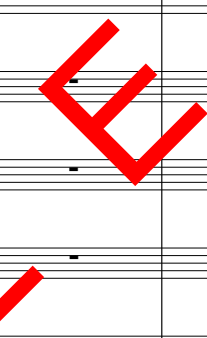
B. Cl.

Alto Sax. 1

Alto Sax. 2

Ten. Sax.

Bari. Sax.



Tpt. 1

Tpt. 2

Hn.

Tbn. 1

Tbn. 2

Bar.

Tba.

S. Bass

*mf*

*f*

*f*

*f*

*f*

*f*

Gm F Gm Cm7 F(sus4) Bb Gm Cm7 F7(sus4) F7 Bb Eb/G F/A Cm/G D7/F#

(Bsn. B.Cl. Tuba)

Play

*Tutti*

B

Dr.

Perc.

Bells

20

Fl.

Ob.

Bsn.

Cl. 1

Cl. 2

B. Cl.

Alto Sax. 1

Alto Sax. 2

Ten. Sax.

Bari. Sax.

Tpt. 1

Tpt. 2

Hn.

Tbn. 1

Tbn. 2

Bar.

Tba.

S. Bass

Dr.

Perc.

Bells

Gm Gm/F C/E Bb/F F Gm7 F7/A Bb Eb/G F/A Cm/G D7/F# Gm Gm/F C7/E F(sus4) F F(sus4) F

27 **C**

Fl. *mf*

Ob. *mf*

Bsn. *mf*

Cl. 1 *mf*

Cl. 2 *mf*

B. Cl. *mf*

Alto Sax. 1 *mf*

Alto Sax. 2 *mf*

Ten. Sax. *mf*

Bari. Sax. *mf*

Tpt. 1 *mf*

Tpt. 2 *mf*

Hn. *mf*

Tbn. 1 *mf*

Tbn. 2 *mf*

Bar. *mf*

Tba. *mf*

S. Bass *mf*

Dr. *mf*

Perc. *mf*

Bells *mf*

**S A M P L E**

Ebb Dm7 Eb Gm7 F Eb Dm7

Shaker  
Tamburin

4

33

Fl.

Ob.

Bsn.

Cl. 1

Cl. 2

B. Cl.

Alto Sax. 1

Alto Sax. 2

Ten. Sax.

Bari. Sax.

Tpt. 1

Tpt. 2

Hn.

Tbn. 1

Tbn. 2

Bar.

Tba.

S. Bass

Dr.

Perc.

Bells

*mf*

*mf*

*mf*

*mf*

E<sub>b</sub> Gm<sup>7</sup> F Gm<sup>7</sup> Cm<sup>7</sup> F(sus4) B<sub>b</sub> Gm<sup>7</sup> Cm<sup>7</sup> F(sus4) F

8 12



44

Fl.

Ob.

Bsn.

Cl. 1

Cl. 2

B. Cl.

Alto Sax. 1

Alto Sax. 2

Ten. Sax.

Bari. Sax.

Tpt. 1

Tpt. 2

Hn.

Tbn. 1

Tbn. 2

Bar.

Tba.

S. Bass

Dr.

Perc.

Bells

F/A C $\flat$ /G D $\flat$ /F $\sharp$  G $\flat$  G $\flat$ /F C/E B $\flat$ /F F G $\flat$ 7 F $\flat$ /A B $\flat$  E $\flat$ /G F/A C $\flat$ /G D $\flat$ /F $\sharp$  G $\flat$  G $\flat$ /F C $\flat$ /E

4